
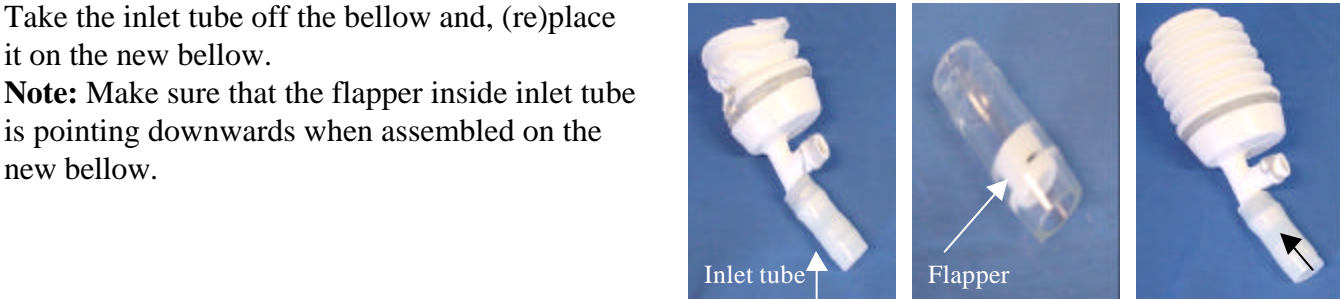


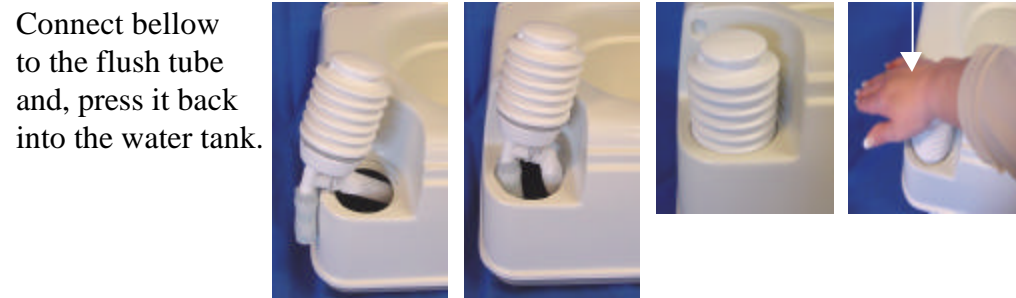
1. 29312 Inlet tube / 07552 Bellow


A.  Disassemble water tank from waste tank and, take seat & cover off.

B.  Cut half off the bellow with the knife and, take the bellow out.

C.  **Note :** Turn the water tank around when holding the bellow with the pincers. Take the bellow off the flush tube.

D.  Take the inlet tube off the bellow and, (re)place it on the new bellow. **Note:** Make sure that the flapper inside inlet tube is pointing downwards when assembled on the new bellow.

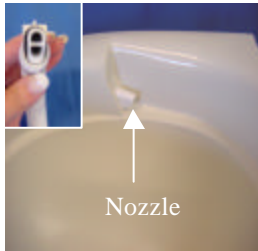
E.  Connect bellow to the flush tube and, press it back into the water tank.

F.  Place seat & cover back onto the water tank.

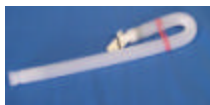
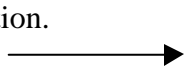
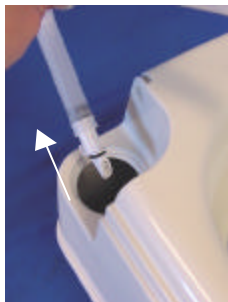
2. 2931162 Flush tube

For taking out the bellow see point A, B and C on the front page.

- D. Go inside nozzle with the long nose pliers and, push it into the water tank.



- E. Bend the new flush tube into a horseshoe shape and place an elastic band around it half way down, forcing it to remain in this position.

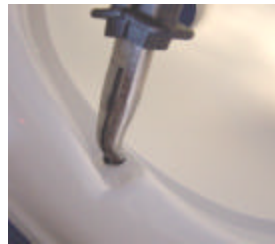


Note : Before refitting, remove the elastic band.



Due to the horseshoe shape of the flush tube, when refitted, the nozzle will be guided back up towards the hole at the entrance of the bowl.

- F. Once in view the nozzle may then be gripped with a long nose pliers and pulled back into the toilet bowl through the hole.



- G. When pulling the nozzle through the hole, make sure that the small rib on the nozzle is pulled inside the toilet bowl.

